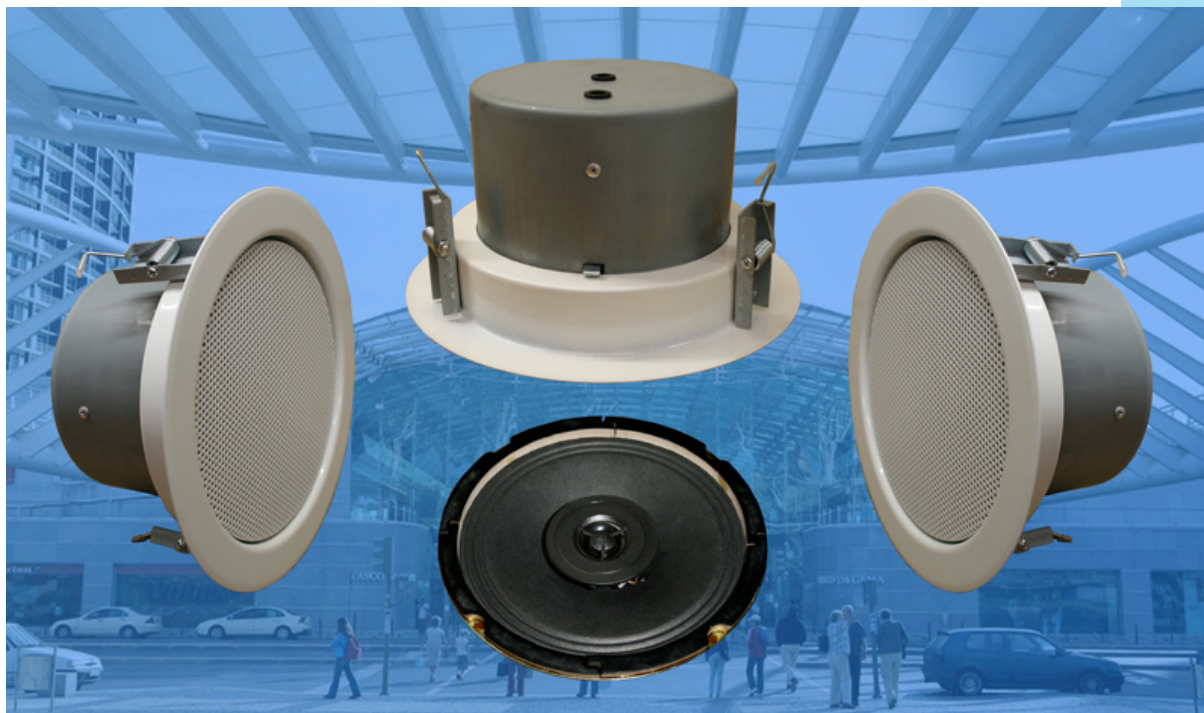


HAUT-PARLEUR PLAFOND **CLB-220FT/30W-II/EN5424** METAL



**C
L
B**

220FT

30W

**EN
5424**

**II
VOIES**

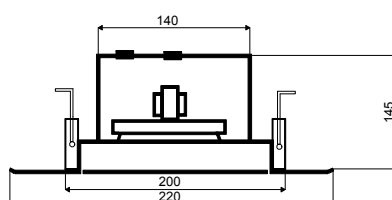
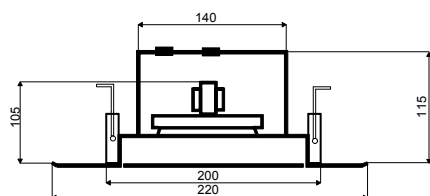
- HP A **2 VOIES** DE HAUTE QUALITE **AUX APPLICATIONS EXIGEANTES**
- **ANTIFEU**
- MONTAGE FACILE GRACE A UN **SYSTEME DE RESSORT A CLIP**
- CAPOT ANTIFEU **FLAT-115-MM** & CAPOT ANTIFEU-**SOUND-145-MM** LIVRABLE
- **50-HZ-TRANSFO** STABLE
- ADAPTATION 100-V PROTEGEE
- VERSION AVEC BORNIER CERAMIQUE ET **THERMO-FUSIBLE** LIVRABLE EN OPTION
- VERSION **EN-5424** NORME **DIN-18032-III ANTI-CHOC** SALLES DE SPORTS

**VERSION EN-5424 AVEC CAPOT ANTIFEU CERTIFIEE:
NUMERO COMMANDES:**

CLB-220FT-30W-II-FLAT/EN-5424 NR-CERTIFICAT: 1293-CPD-0371
CLB-220FT-30W-II-SOUND/EN-5424 NR-CERTIFICAT: 1293-CPD-0371

CARACTÉRISTIQUES TECHNIQUES: CLB-220FT/30W-II/EN5424

Haut-parleurs:	30W - 2 VOIES
Ligne 100V:	30-20-10-6-3W
Bande passante:	70 - 20.000 Hz
EN-Sensibilité 1W/4M:	81 dB
Pression acoustique 30W/4M:	94 dB
Pression acoustique 1W/1M max EASE/Ulysses:	103 dB (3,3 KHz)
Pression acoustique 30W/1M max EASE/Ulysses:	118 dB (3,3 KHz)
Angle d'ouverture H (0,5/1/2/4 KHz):	180°/180°/127°/61°
Angle d'ouverture V (0,5/1/2/4 KHz):	180°/180°/127°/61°
Dimensions:	FLAT: 220 mm x 115 mm / SOUND: 220 x 145 mm
Encastrement:	200 mm
Poids:	1,7 kg
Couleur:	blanc



**H
A
U
T
P
A
R
L
E
U
R

P
L
A
F
O
N
D**

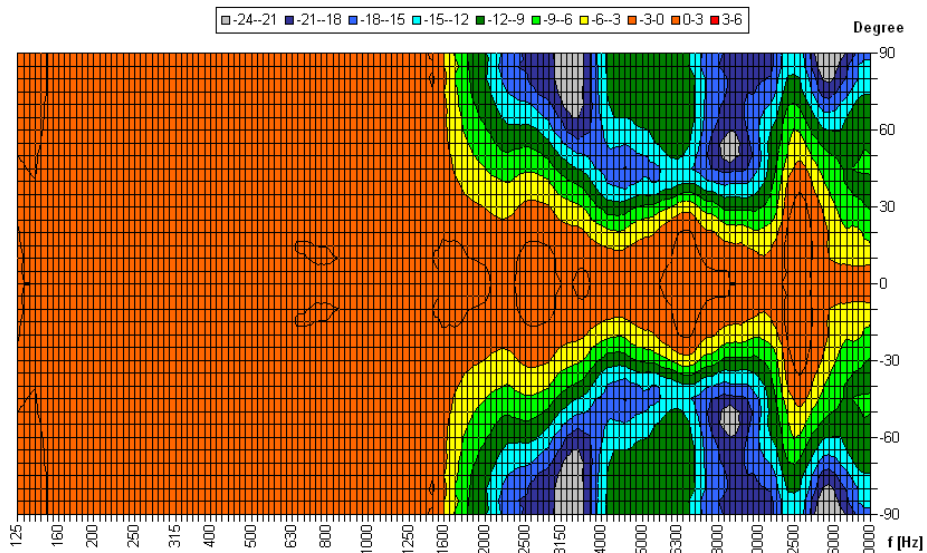
ANGLE D'OUVERTURE HP PLAFOND CLB-220FT/30W-II/EN5424

Proc. de mesure	Axe	500Hz	1000Hz	2000Hz	4000Hz
EN5424	HOR	180°	180°	127°	61°
EN5424	VER	180°	180°	127°	61°
EASE/ULYSSES	HOR	180°	180°	90°	50°
EASE/ULYSSES	VER	180°	180°	90°	50°

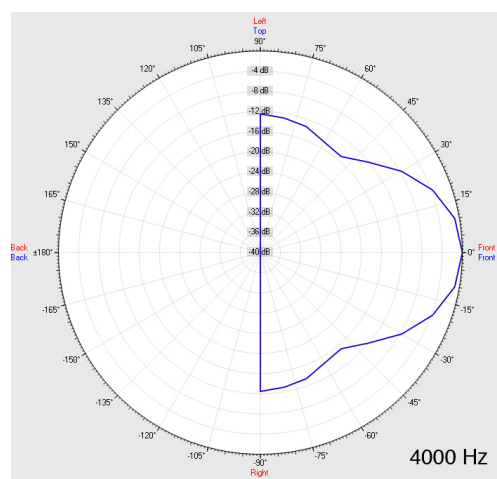
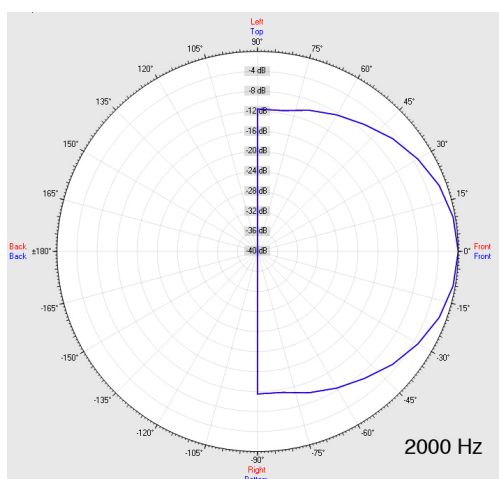
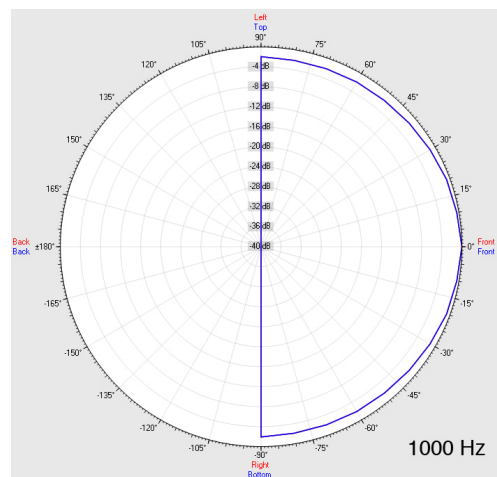
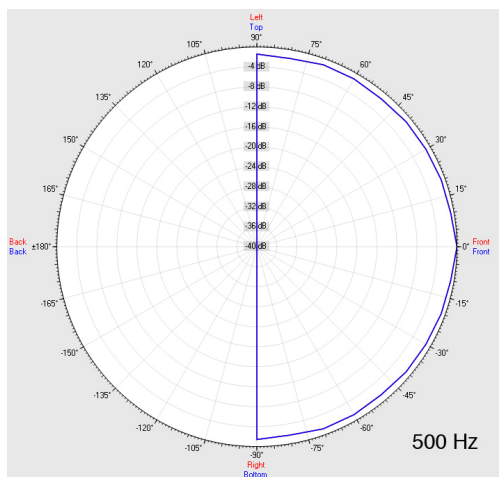
Source Data: D:\Strauch\Elko-Schmid\CLB22030\Daten\HOR\220FTHOR.POX

Copyright by Four-Audio GmbH & Co KG Licensed to AAC

Horizontal Isobars of: Elko-Schmid CLB-220F 30W



Parameters: Cyclic Move: 0° ; Symmetry: 0..+180 sym ; Freq.Smooth: 1/3 Oct ; Ang.Resol.: 5° ; Rel. to: 0° Axis 0°



CLB
220FT

30W

EN
5424

II
VOIES

H
A
U
T
P
A
R
L
E
U
R

P
L
A
F
O
N
D