

# 100V/6-WATT-HAUT-PARLEUR-PLAFOND EN-180FT/EN5424



EN  
180  
FT  
EN  
5424

6W

- HP **ENTIEREMENT EN METAL**
- **CAPOT ANTIFEU** INTEGRE
- **GRANDE COUVERTURE** DE DIFFUSION **180°-1KHz / 172°-4KHz**
- MONTAGE RAPIDE GRACE A UN **SYSTEME DE RESSORT A CLIP**
- BOITIER DE **CONNEXION INTEGRE**
- ADAPTATION **100V PROTEGEE**

- **VERSION EN-180FT/EN5424 CERTIFIEE:**  
**NUMERO COMMANDE:**

**EN-180FT/EN5424**  
NR-CERTIFICAT: 1293-CPD-0305

M  
E  
T  
A  
L

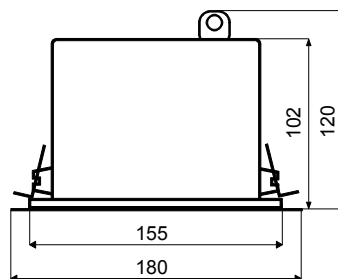
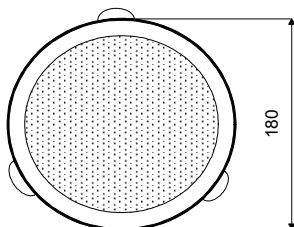
## CARACTÉRISTIQUES TECHNIQUES:

## EN-180FT/EN5424

Puissance nominale:	6 Watt
Ligne 100V:	6-3W
Bande passante:	100 – 15.000 Hz
EN-Sensibilité 1W/4M:	77 dB
Pression acoustique max 6W/4M:	84 dB
Pression acoustique 1W/1M max EASE/Ulysses:	96 dB (2 KHz)
Pression acoustique 6W/1M max EASE/Ulysses:	103,5 dB (2 KHz)
Angle d'ouverture H (0,5/1/2/4 KHz):	180°/180°/154°/172°
Angle d'ouverture V (0,5/1/2/4 KHz):	180°/180°/154°/172°
Dimensions:	180 x 110 mm
Encastrement:	155 mm
Poids:	1 kg
Couleur:	blanc

H  
P

P  
L  
A  
F  
O  
N  
D



EN-5424-PAGE-9-A

# ANGLE D'OUVERTURE 100V/6-WATT-HP-PLAFOND EN-180FT/EN5424

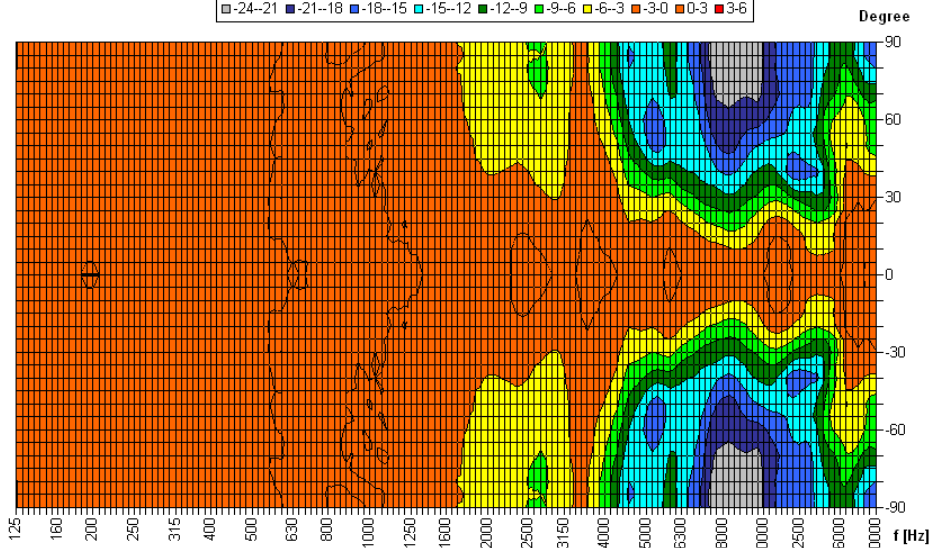
Proc. de mesure	Axe	500Hz	1000Hz	2000Hz	4000Hz
EN5424	HOR	180°	180°	154°	172°
EN5424	VER	180°	180°	154°	172°
EASE/ULYSSES	HOR	180°	180°	180°	180°
EASE/ULYSSES	VER	180°	180°	180°	180°

Source Data: D:\Strauch\Elko-Schmid\EN-180\Date\Dummy\HOR\Dummy.POX

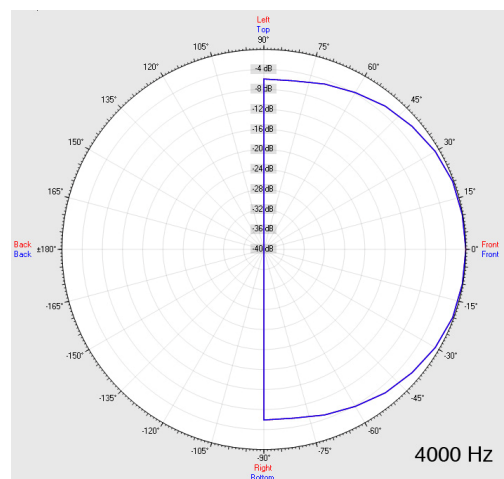
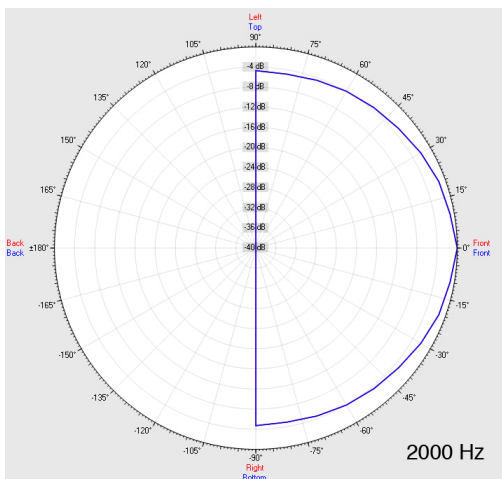
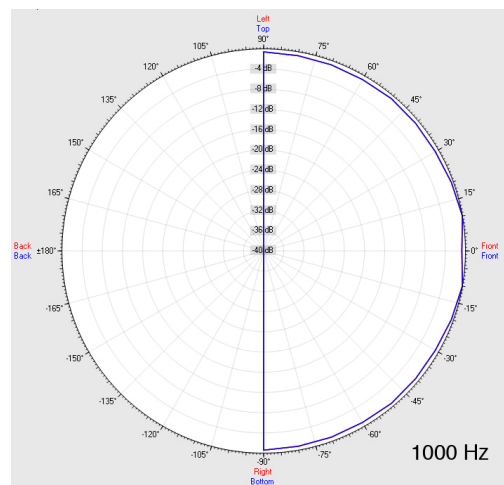
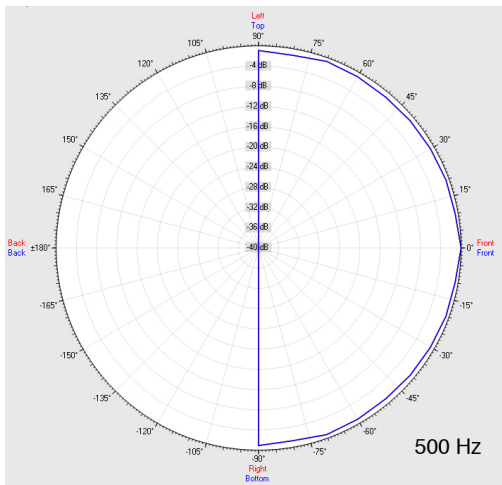
Copyright by Four-Audio GmbH & Co KG Licensed to AAC

Horizontal Isobars of: Elko-Schmid EN-180

■ -24--21 ■ -21--18 ■ -18--15 ■ -15--12 ■ -12--9 ■ -9--6 ■ -6--3 ■ -3--0 ■ 0--3 ■ 3--6



Parameters: Cyclic Move: 0° ; Symmetry: 0..+180 sym ; Freq.Smooth: 1/3 Oct ; Ang.Resol.: 5° ; Rel. to: 0° Axis 0°



EN  
180  
FT  
EN  
5424

6W

METAL  
HP  
PLAFOND